



The Responsible Minerals Initiative

SEMI Webinar on Critical Minerals, Due Diligence, and the Semiconductor Supply Chain

July 9, 2025



The RBA and its Initiatives



Responsible Business Alliance

Advancing Sustainability Globally



The Responsible Business Alliance is the world's largest industry coalition dedicated to responsible business conduct in global supply chains.



RMI Vision

THE RMI'S VISION



The RMI works globally to enable business and stakeholders in mineral supply chains to work collaboratively on the definition and adoption of policies, practices, data and tools that foster responsible mineral sourcing and production, to achieve sustainable and resilient minerals supply chains.



How can the RMI best support you in 2025?

from member poll





How the RMI supports minerals due diligence and responsible sourcing



Independent Assessments and Assurance

Assurance program aligned with OECD, UNGP frameworks, ISO 14001 and 45001; reduces audit burden on suppliers and includes public conformant smelters or refiners or auditees.



Due Diligence Data and Supply Chain Tools

Assessment reports, Reasonable Country of Origin data (RCOI), mineral and country risk assessment information, mineral reporting templates



Guidance and Peer Learning

Practical guides to due diligence, due diligence practice and policy webinars, member working groups, global/regional conferences, other publications

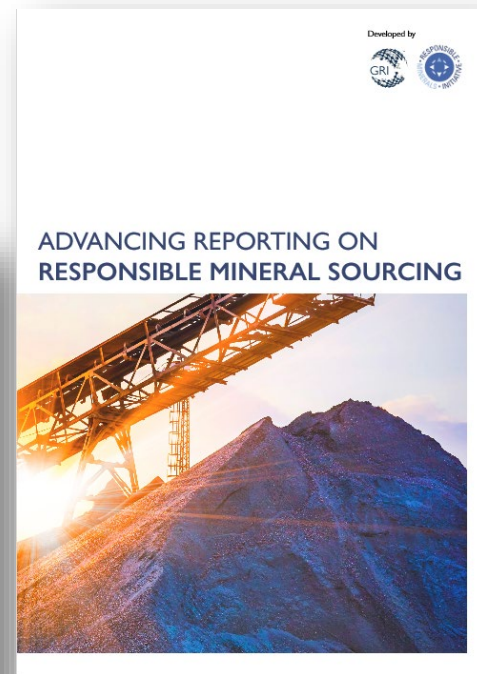
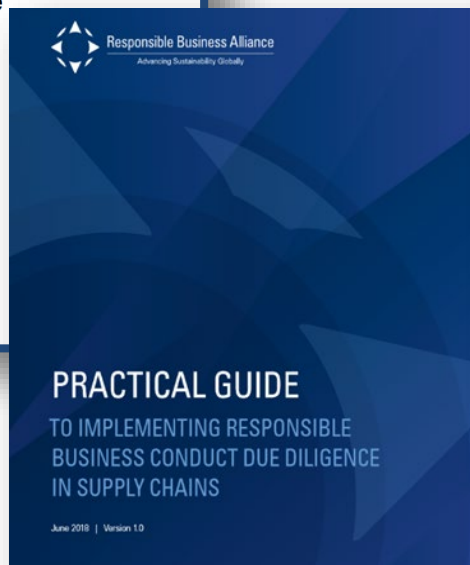
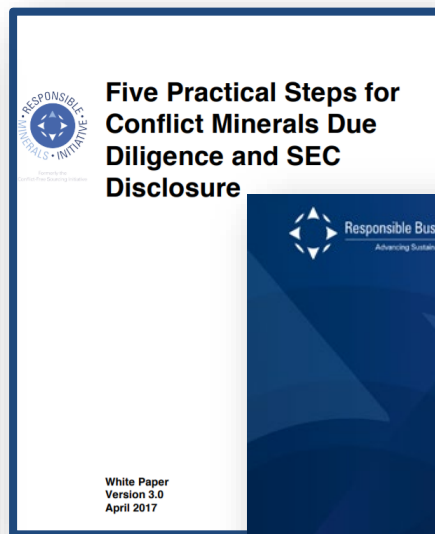
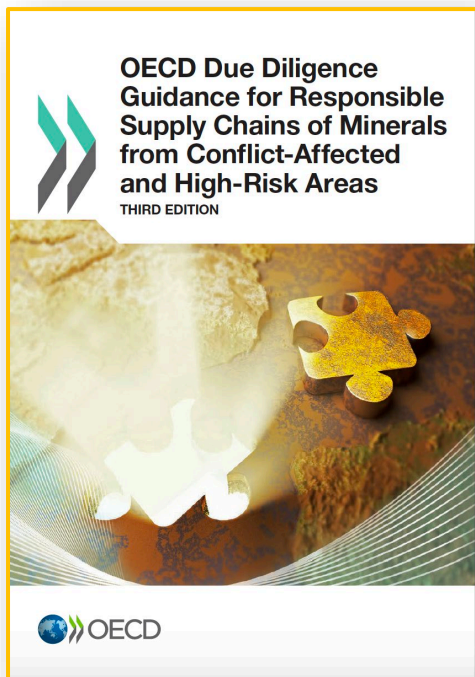


Convening and Thought Leadership

Engaging with governments, international organizations, regulators, NGOs, civil society, industry to address emerging challenges



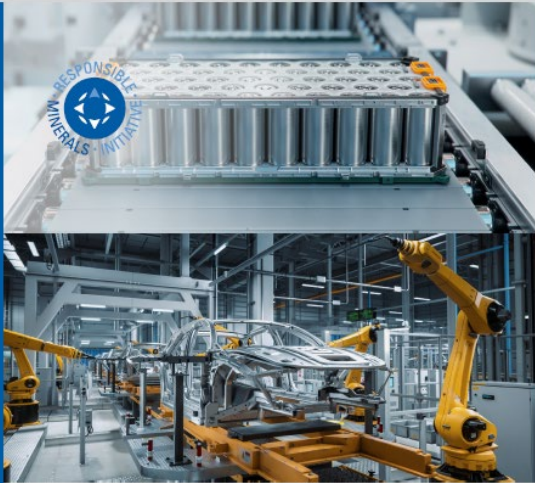
RMI Standards Rooted in Regulations, International Guidance, Industry Best Practice



www.responsiblemineralsinitiative.org/trainin-g-and-resources/publications-and-guidance/



NEW RMI Standard Suite: Expanded Risk Coverage



RESPONSIBLE MINERALS ASSURANCE PROCESS SUPPLY CHAIN DUE DILIGENCE PLUS

Responsible Minerals Initiative (RMI)
Version 1.0
Original Publication: April 30, 2025
Effective Date: April 30, 2025

NEW



RESPONSIBLE MINERALS ASSURANCE PROCESS FACILITY STANDARD FOR SOCIAL, ENVIRONMENTAL, OHS AND GOVERNANCE RISKS

Responsible Minerals Initiative (RMI)
Version 2.0 for Piloting
Original Publication: June 2021
Revision Date: April 30, 2025
Effective Date: April 30, 2025

REVISED

Press release:

[RMI Releases New Standard Suite for Social, Environmental, OHS and Governance Risks](#)

Facility Standard for Social, Environmental, OHS and Governance Risks (Facility Standard):

[RMIFacilityStandardforSocialEnvOHSandGovRisks_April2025.pdf](#)

Supply Chain Due Diligence Plus (SCDDP) Module

[RMISupplyChainDueDiligencePlusModule_April2025.pdf](#)



How RMI Assessments Drive and Enable Responsible Minerals Sourcing

Downstream –
Components,
Mftrs, OEMs

pinch point

Smelters & Refiners

Upstream –
Traders,
Miners

Pinch-point approach to due diligence:

- Independent assessments focus on “narrowest” part of the supply chain

RMI Public Conformant List:

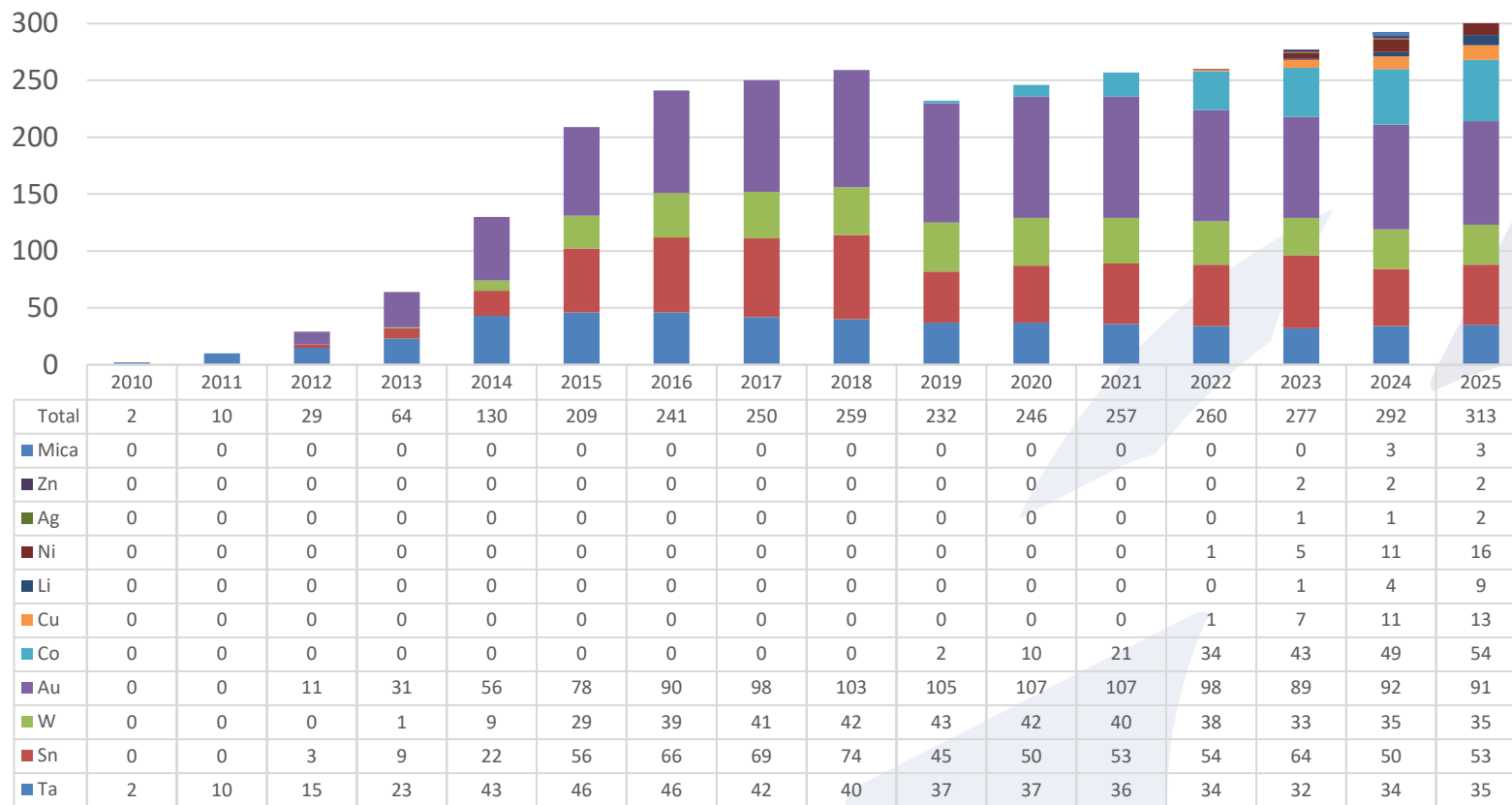
- RMI assessments feed into public list of smelters/refiners which meet the RMI standard
- RMI conformant list globally recognized as responsible minerals processors; supports regulatory compliance (Dodd-Frank, EU CMR)

Reasonable Country of Origin Inquiry:

- RMI members receive bi-monthly RCOI data for conformant smelters/refiners



Global smelter participation in due diligence programs: 313 Conformant Smelters & Refiners





RMI's Mineral Reporting Templates

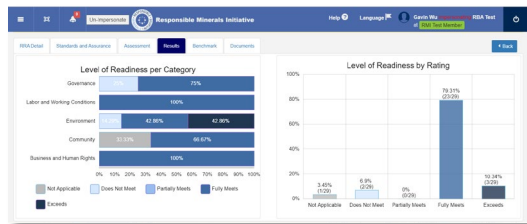
The RMI's MRTs are **common industry templates** which companies use to gather and disclose information about their supply chains in a standardized manner – to identify **smelters/refiners** and in some cases **mine-level** facilities.

- MRTs can be deployed at a facility or product level.
- MRTs are self-reporting tools.
- The RMI releases updated forms annually.

RMI MRTs	Minerals in scope	Release date	Specificities
Conflict Minerals Reporting Template	Tin, Tantalum, Tungsten, Gold	April 2025	Aligned with IPC Standard Collect only SORs
Extended Minerals Reporting Template	Cobalt, Mica, Copper, Nickel, Lithium, Graphite	April 2025	Aligned with IPC Standard Collect SORs and Mine Sites
Additional Minerals Reporting Template	Can be used for any mineral, supports a max of 10 minerals	October 2024	Not aligned with IPC Standard Collect SORs and Mine Sites

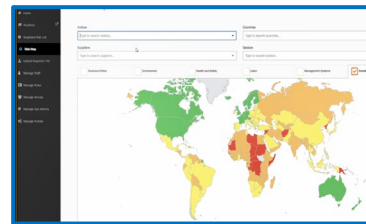


Other RMI Member Tools and Databases



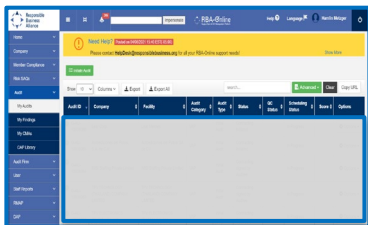
Risk Readiness Assessment

- Self Assessment tool
- Aligned with top standards



Global Risk Map

- Assess inherent and potential risks
- Latest methodology and indices



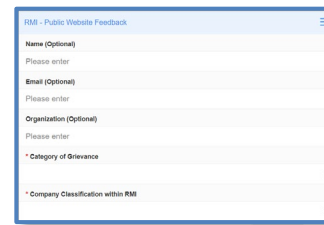
Facility Database

- Thousands of alleged/eligible facilities, two dozen+ minerals



Material Insights Platform

- Mineral specific ESG risk factors
- Provides critical production data



Grievance Mechanism

- Facilitates reporting of grievances
- Supported by grievance review process



How to use RMI tools for Due Diligence

The [How to use RMI tools to support your due diligence](#) guidance supports companies with specific guidance utilizing established and credible RMI tools. This guidance follows the OECD step 5 process.

STEP 1

AS PART OF SETTING A STRONG MANAGEMENT SYSTEM, YOU ARE EXPECTED TO ESTABLISH TRACEABILITY OR CHAIN OF CUSTODY SYSTEM OVER YOUR MINERAL SUPPLY CHAIN; YOU CAN:

STEP 2

AS PART OF IDENTIFYING AND ASSESS RISKS IN YOUR SUPPLY CHAIN, YOU CAN:

STEP 3

AS PART OF MANAGING RISKS, YOU CAN:

STEP 4

AS PART OF ENSURING THAT SORS PARTICIPATE IN INDUSTRY PROGRAMS TO HAVE THEIR DUE DILIGENCE PRACTICES ASSESSED AGAINST A STANDARD ALIGNED WITH OECD GUIDANCE, YOU CAN:

STEP 5

AS PART OF EFFECTIVELY COMMUNICATING EFFORTS IN YOUR PUBLIC REPORT, YOU CAN:



**How to use RMI
tools to support
your due diligence:**

a guide for downstream
companies



The RMI Learning Platform: Online Courses

The RMI provides free online course modules on minerals sourcing due diligence, minerals-specific risks in the supply chain, regulatory requirements, OECD Guidance and best practices on responsible mineral sourcing, tutorials on RMI standards and tools, and more.

Popular courses:

- RMI Responsible Sourcing [English](#), [Chinese](#)
- RMI Overview of RMAP Standard Requirements (Animated Training) [English](#), [Chinese](#)
- RMI Management Systems [English](#), [Chinese](#)
- Introduction to the OECD Due Diligence Guidance [English](#), Chinese
- RMI Tools: Supporting Due Diligence for Downstream Companies [English](#)
- Full RMI course list [HERE](#)

The screenshot displays the RMI Learning Platform's Course Catalog. At the top, there is a search bar and navigation links for 'Back', 'Home', and 'Course Catalog'. Below the search bar, there are filters for 'CATEGORIES', 'LANGUAGE', and a search input. The 'Categories' filter is expanded, showing a list of categories: 'Categories', 'Brand and Retailer', 'Factory', 'RBA Training', 'RMI Training', and 'Vendor'. The 'RMI Training' category is selected, and the main content area displays a grid of course cards. The first two cards are 'Overview of RMI's RMAP Standard' (with Chinese and English titles) and are marked as 'NOT ENROLLED' with a 5.0 rating. The third card is 'Material Insights Platform Launch Webinar', which is 'ENROLLED'. The fourth card is 'KYC and AML 反洗钱 (AML) 和反恐怖主义融资 (CTF) 计划', which is 'NOT ENROLLED'. Each card includes a star rating and a language indicator (ZH or EN).

Register for a free account: [E-learning](#)



Semiconductor Industry and Responsible Sourcing

Electronics sector, including semiconductor, long in focus as downstream users of materials from the DRC and beyond.

- Tantalum: Used in capacitors and other components.
- Tin: Used in solder and other applications.
- Tungsten: Found in semiconductors, oscillators, and integrated circuits.
- Gold: Used for plating, bond wires, and connectors.
- MANY MORE critical minerals in scope, globally.

Regulators, investors, downstream customers, and other stakeholders look to the semiconductor industry along with the broader electronics, automotive, and other sectors to source responsibly – including 3TG and the broader set of critical minerals, globally.

The good news:
Smelters/refiners are shared across sectors, thus due diligence guidance, assessments, data, and other tools can be leveraged by the semiconductor industry – and automotive – and beyond.

The screenshot shows a webpage from Stewart Investors. The header includes the Stewart Investors logo and navigation links: 'How we invest', 'Our strategies', 'Insights', 'About us', and a search icon. The main content area features a large image of a mining site with the headline 'Conflict Minerals – the power of collaborative engagement'. Below the headline is a sub-headline: 'Supply chain complexities'. The article text discusses the issue of irresponsibly sourced minerals and the associated human rights abuses within the semiconductor supply chain, mentioning that supply chain complexity means that even determined companies, such as Fairphone, can only map four out of the twelve tiers of companies in their supply chain. It notes that some companies have been open about the issues and successes have already been achieved with Korean producers. Unfortunately, many companies seem content with fulfilling minimum credible reporting standards and taking a basic compliance approach. Most semiconductors are produced in parts of Asia and Asian companies are the most underrepresented members of the RMI so raising awareness and encouraging them to become members will be an essential part of our future engagement plans.

RMI Investor Network participant – Stewart Investors

<https://www.stewartinvestors.com/sg/en/retail/insights/conflict-minerals-power-of-collaborative-engagement.html>



RMI's mission is to provide companies with tools and resources to make sourcing decisions that improve regulatory compliance and support responsible sourcing globally.

www.responsiblemineralsinitiative.org
rmi@responsiblebusiness.org