

SEMI Global Update



February 9, 2021



Market Research

Critical Subsystems Service and Support Revenues on Course to Reach \$3.5 Billion by 2025

Revenues from service and support related to critical subsystems reached \$2.3 billion in 2020 and are on track to exceed \$3.5 billion by 2025. Growth in the installed base ...



Diversity and Inclusion

The History of Black History Month in the U.S. – Making it a Year-Round Celebration in Chip Industry

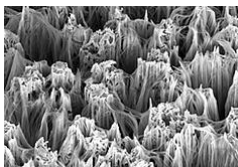
Black Americans have contributed tremendously to the technology industry, from Garrett Morgan, who invented the gas masks that protected our soldiers in World ...



Smart Manufacturing

The Time is Now to Move to Smarter Manufacturing

The year 2020 sparked a tremendous acceleration in the digital transformation worldwide, driving a sharp rise in demand for semiconductors and escalating ...



Standards

Electron Microscopy Task Force Probes Industry Preferences for Automated TEM Workflow Solutions

Many countries are enforcing safety requirements for semiconductor equipment containing high-pressure systems. The SEMI S2 revision proposes the addition of a ...



SEMI-Related

AI Predicts Asymptomatic Carriers of COVID-19

Machine learning identifies superspreaders and ranks source of infection among a moving crowd.

More News...

Window on China

SEMI Blogs

Advanced Packaging

Upcoming Events/Webinars

Feb 3-12	SEMICON Korea 2021 [Virtual]	KST
Feb 15-19	Technology Unites Global Summit	CET
Feb 22-26	Virtual FLEX Conference & Exhibition	PST

Coronavirus: SEMI Events Status Updates



Please send feedback about SEMI Global Update to Michael Hall at semiglobalupdate@semi.org.

SUBSCRIBE

Follow Us



SEMI, 673 S. Milpitas Blvd., Milpitas, California 95035, United States

[Unsubscribe](#) [Manage preferences](#)