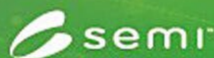


# SEMI Global Update



February 16, 2021



## Technology Unites Global Summit

### SEMI Global Summit Opens with Executive Forum, Digital Transformation, Security and Sustainability in Spotlight

The virtual event connects industry leaders and stakeholders across the entire electronics design and manufacturing value chain for the latest developments ...



## Technology Unites Global Summit

### European SEMI Award Honors KU Leuven, TU Dresden and CEA-Leti for Key Chip Industry Contributions

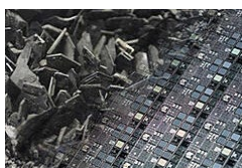
The European SEMI Award, established 32 years ago, recognizes key players in the global manufacturing supply chain for their leadership excellence and strategic ...



## Smart Mobility

### SEMI Smart Mobility Lead Weighs in on Chip Shortage

I recently spoke with Automotive Logistics Magazine about the growing importance of the semiconductor supply chain's connection with the automotive industry and the ...



## Standards

### 200mm Silicon Carbide Wafer Specification and Marking Update

SEMI M55, initially developed in 2004 for 50mm wafers, has been updated over the years to add specifications for 76.2mm, 100mm, and 150mm wafers. The proposal ...



## SEMI-Related

### How to Double Mask

The CDC has released a report showing that two masks are better than one for curbing transmission of the coronavirus. Here's the proper way to double up.

## More News...

Window on China

SEMI Blogs

Advanced Packaging

## Upcoming Events/Webinars

Feb 15-19	<a href="#">Technology Unites Global Summit</a>	CET
Feb 22-26	<a href="#">Virtual FLEX Conference &amp; Exhibition</a>	PST
Mar 4	<a href="#">SEMI Virtual Forum: Semiconductor Outlook - Navigating Through Turbulent Times</a>	PST

## Coronavirus: SEMI Events Status Updates



Please send feedback about SEMI Global Update to Michael Hall at [semiglobalupdate@semi.org](mailto:semiglobalupdate@semi.org).

SUBSCRIBE

## Follow Us



SEMI, 673 S. Milpitas Blvd., Milpitas, California 95035, United States

[Unsubscribe](#) [Manage preferences](#)

