

# SEMI Global Update



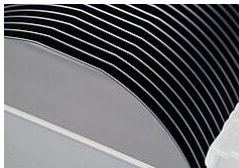
November 3, 2020



## Market Research

### 300mm Fab Spending to Boom Through 2023 With Two Record Highs, SEMI Reports

300mm fab investments in 2020 will grow by 13% year-over-year to eclipse the previous record high set in 2018 and log another banner year for the semiconductor ...



## Market Research

### Silicon Wafer Shipments Slip in Third Quarter 2020 but Strong for Year

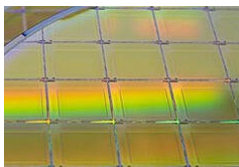
Worldwide silicon wafer area shipments contracted 0.5% to 3,135 million square inches in the third quarter of 2020 compared to the second quarter of the year but ...



## Exhibition

### SEMICON JAPAN 2020 Goes Virtual to Highlight Electronics Innovations Powering a Smarter World

The promise of growing prosperity worldwide through the digital transformation and smart technology innovations will take center at SEMICON Japan 2020 Virtual ...



## Innovation

### Winning the Global Race for Semiconductor Technology with Virtual Fabrication

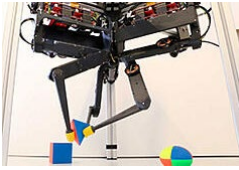
Semiconductor process development is no easy task, with each generation of devices more difficult and expensive to create. Traditional cycles of build-and-test ...



## Standards

### SEMI Developing Standards Suite to Advance Assembly Line Automation in Japan

SEMI estimates there exist about 80,000 surface mount technology (SMT) and printed circuit board assembly (PCBA) manufacturing lines globally. With that many lines ...



SEMI-Related

## Understanding Causality Is the Next Challenge for Machine Learning

So far, deep learning has comprised learning from static datasets, which makes AI really good at tasks related to correlations and associations. However, neural nets ...

### More News...

[Window on China](#)

[SEMI Blogs](#)

[Advanced Packaging](#)

### Upcoming Events/Webinars

|            |  |     |
|------------|--|-----|
| November 4 | <a href="#">International Trade Partners Conference (ITPC)</a> | PST |
| November 5 | <a href="#">A Look Inside the Tech Unites Global Summit</a>    | CET |
| December 9 | <a href="#">EU Collaborations Driving Smart Mfg Excellence</a> | CET |

### [Coronavirus: SEMI Events Status Updates](#)



Please send feedback about SEMI Global Update to Michael Hall at [semiglobalupdate@semi.org](mailto:semiglobalupdate@semi.org).

SUBSCRIBE

Follow Us



SEMI, 673 S. Milpitas Blvd., Milpitas, California 95035, United States

[Unsubscribe](#) [Manage preferences](#)