



SGU | SEMI Global Update

May 12, 2020



Combatting COVID-19 with AI, Big Data Platforms



The Way Forward – McKinsey & Company Insights



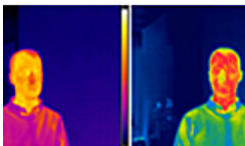
Building Resilience, Business Continuity (Part 2)



Don't Touch That Button – Use Voice Instead!



Reskilling and Upskilling After COVID-19



SEMI-Related: Thermal Cameras for Contact Tracing

More News...

Window on China

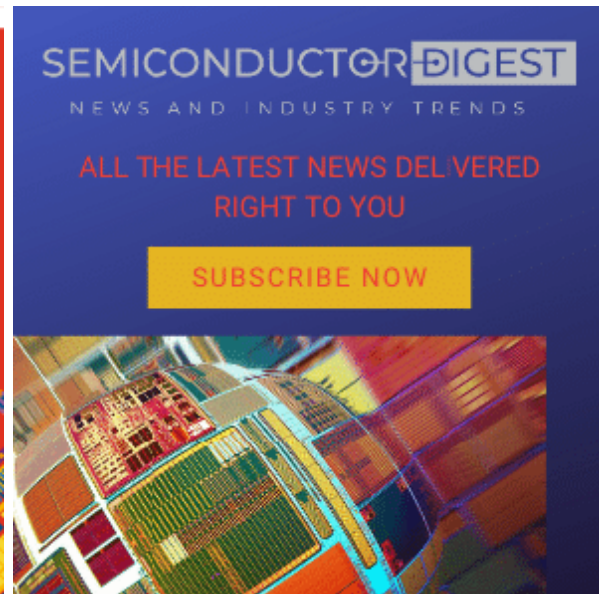
SEMI Blogs

Advanced Packaging

Upcoming Events/Webinars

May 21	Restarting Economies and the Consequences for Business	Pacific Standard Time
May 26	Outlook: Fab Investment, Power/Compound and Wafer Market	Korea Standard Time
Jun 4	Business Unusual: Journey to Recovery on E&E Industry	Singapore Standard Time

[Coronavirus: SEMI Events Status Updates](#)



We'd love your input. Please send feedback about this newsletter to Michael Hall at semiglobalupdate@semi.org.

Follow us:



SEMI 673 S. Milpitas Blvd. Milpitas California 95035 United States
You received this email because you are subscribed to Newsletters from SEMI .
To unsubscribe or to update your email subscriptions, please visit the [email preferences](#) page.