

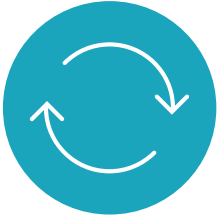


Chronolife

Real Time Intelligence for HealthCare

October 29, 2019

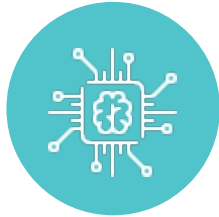
Who we are ?



A Medtech and Service Provider focus on the operation of end-to-end digital connected health services



ISO 13 485 in June 2019 with CE-marked/FCC certified products and services



A patented Edge Computing technology named HOTS able to support and power predictive services on low power engine



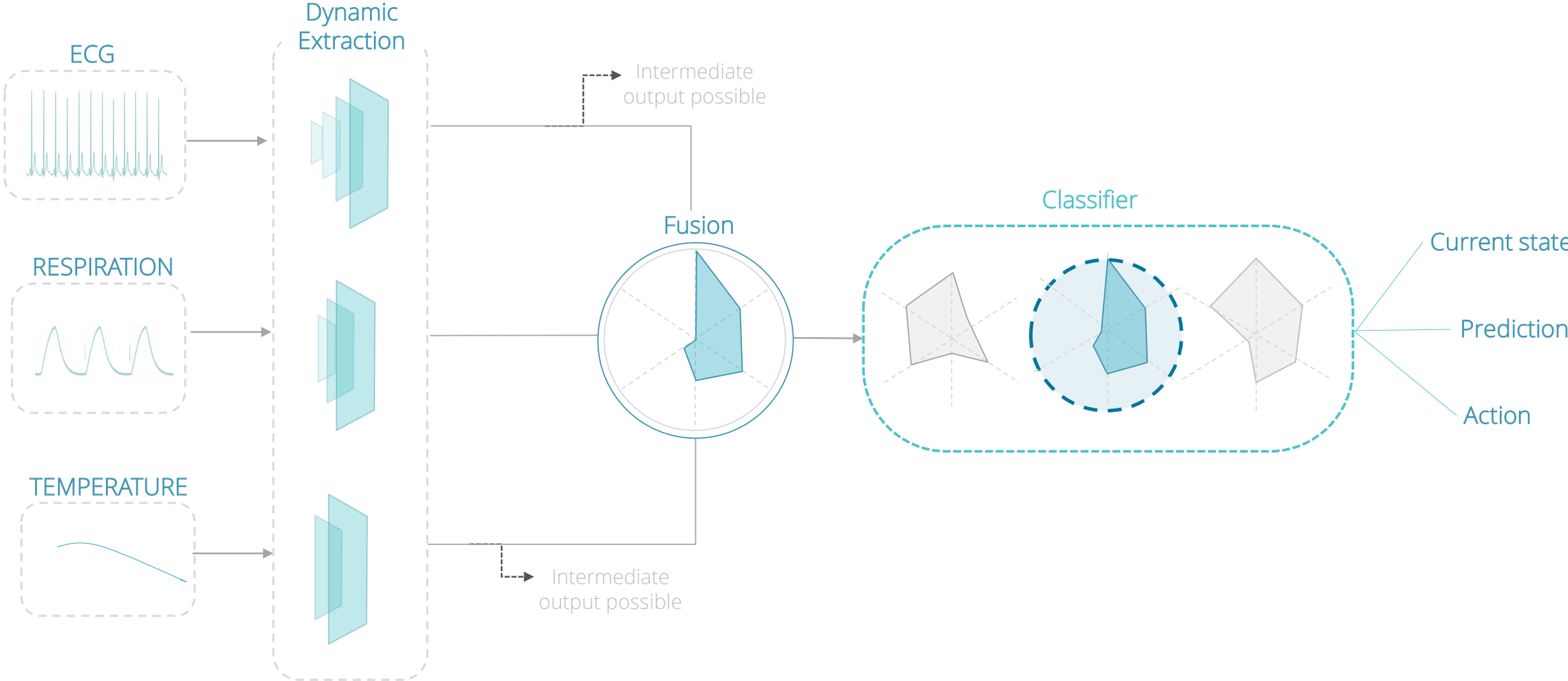
An engineering and data science team supporting customers to port, integrate and validate HOTS for their own needs and applications



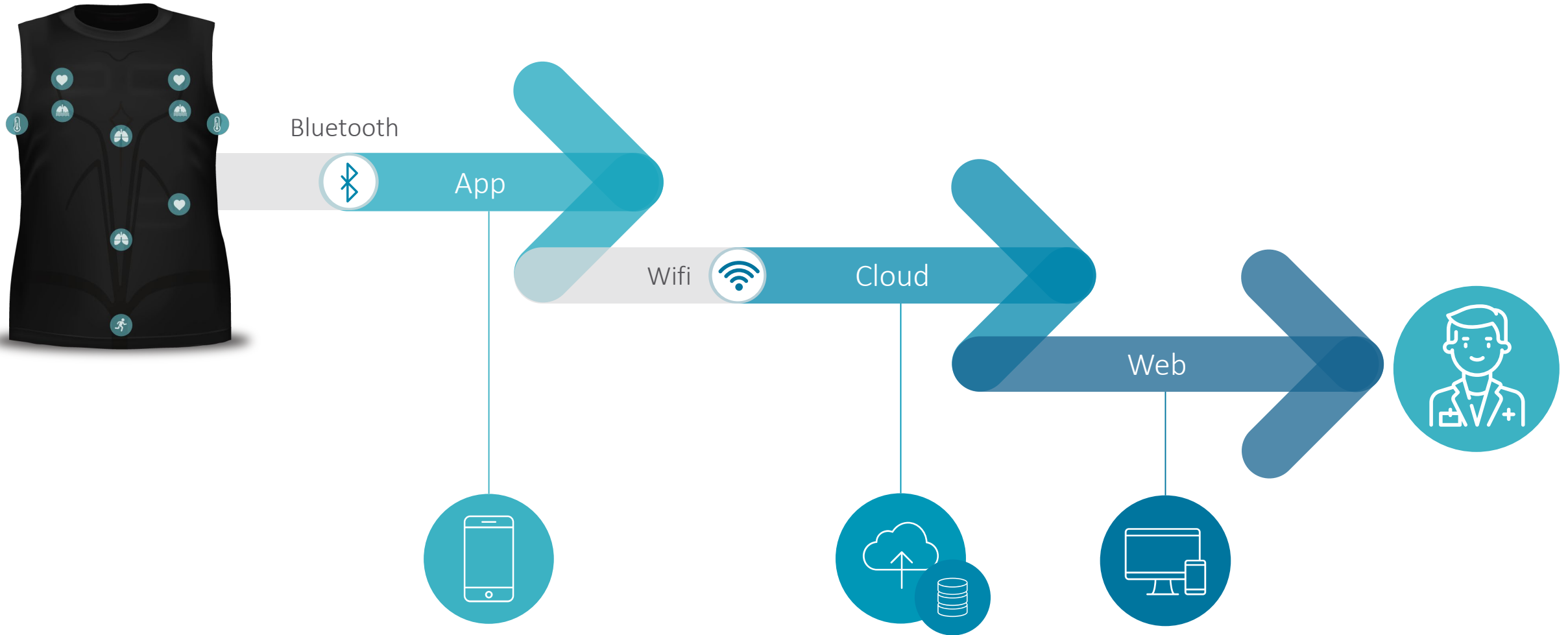
HQed in Paris (F), a subsidiary set up in San Diego, CA, for NA Operations

HOTS Medical Use Case

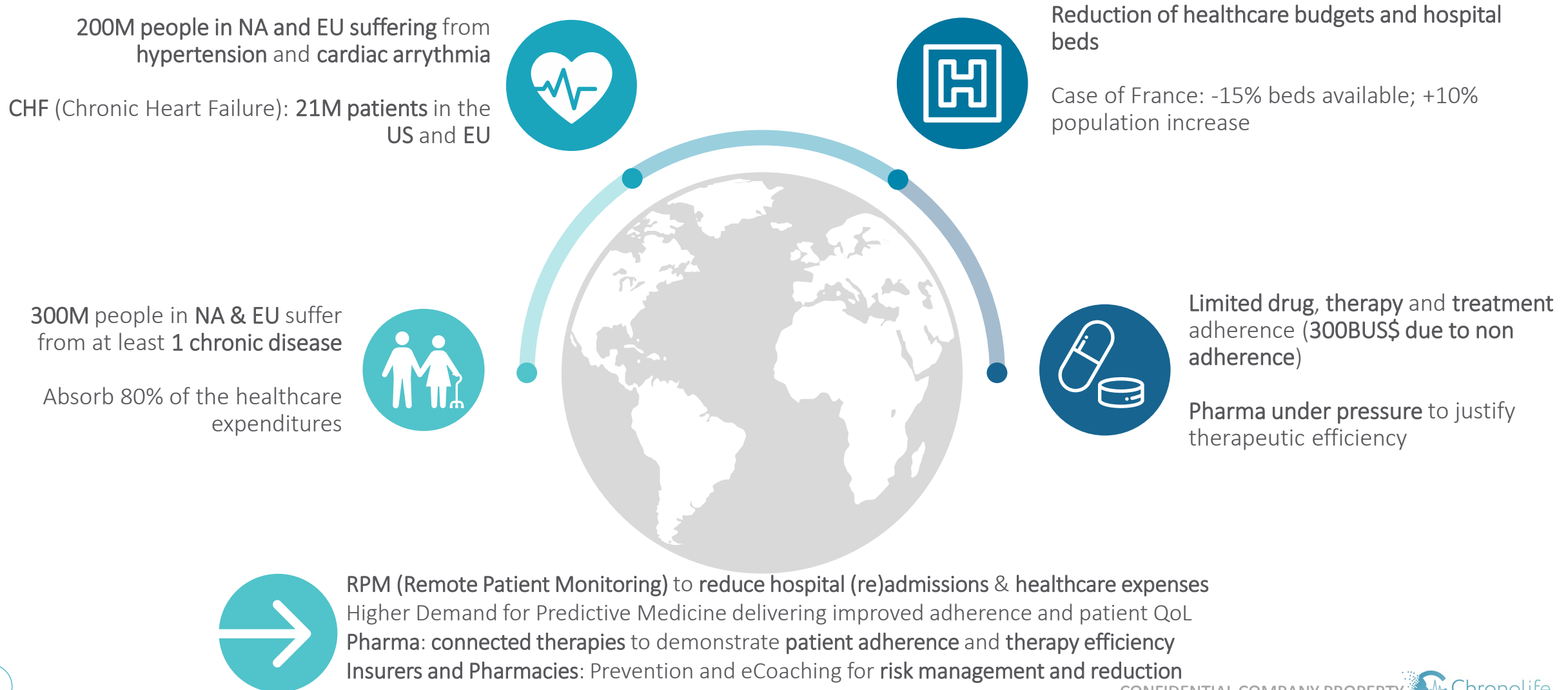
Capable of Processing Multiple Parameters at the same time



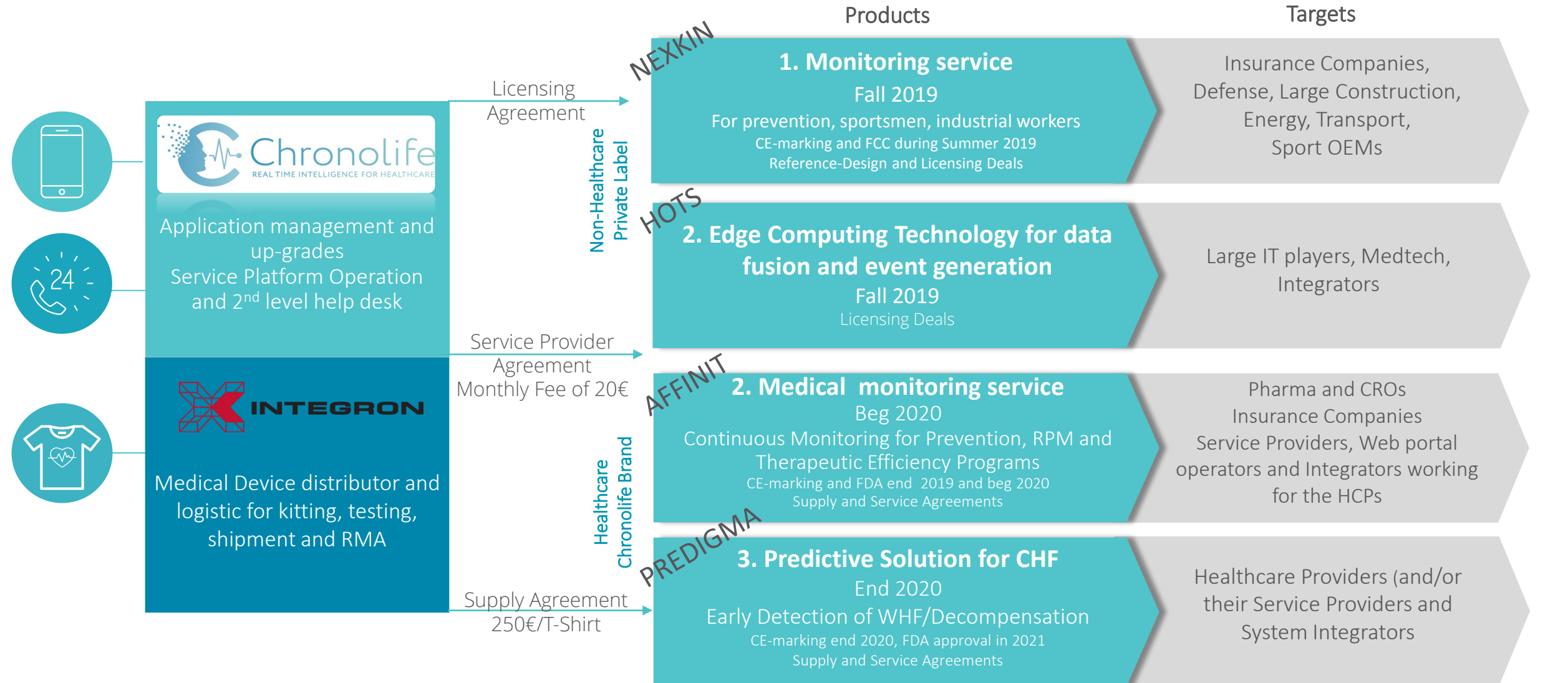
Chronolife : a MedTech and a Service Operator



The Global Challenges we answer to in Healthcare



Product Portfolio, Business Model



Predigma: Predictive Solution for CHF



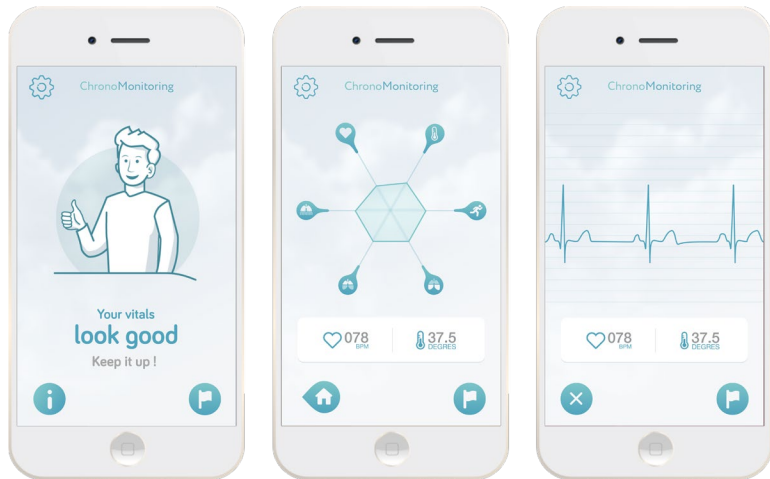
Continuous monitoring in a multisensor embedded smart textile through smartphone app



To predict acute heart failure event



Usable and washable as a common « shirt »



Intelligent Care provided all along the patient pathway

Usual Medical Device Kits used for RPM and therapeutic efficiency programs



All in One Product

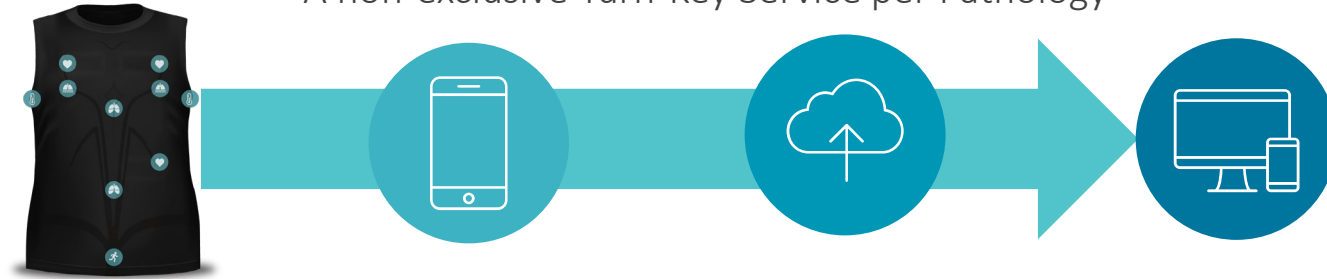
- ✓ De facto adherence
- ✓ RPM operation cost reduction
- ✓ Continuous monitoring for early detection of WHF
- ✓ Better quality of life



Overview

✓ Six Medical Devices in One
Comfortable & Washable Shirt

✓ A non-exclusive Turn-Key Service per Pathology



✓ Patented Predictive Algorithm trained on different Pathologies and on Multi-Parameter Data Fusion, can be ported and integrated in MedTech platforms

✓ Pricing Compatible with RPM/eHealth Decrees and reimbursement rules
(MD price: 250€/Shirt; Service Fee: 20€)

✓ Contribute to Operating Cost Reduction

✓ Improve Patient Adherence and Outcomes