



SGU | SEMI Global Update

January 21, 2020



World Chip Equipment Growth Returns!



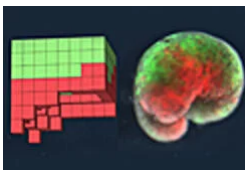
SEMI Backs Long-Term European Industry Strategy



Smart Tech Amazes at SEMICON Japan!



Smart Supply Chain Integration



SEMI-Related: Self-Healing Robots

More News...

[Window on China](#)

[SEMI Blogs](#)

[Advanced Packaging](#)

Upcoming Events

Jan 27-29	3D & Systems Summit	Dresden, Germany
Feb 5-7	SEMICON Korea 2020	Seoul, Korea
Feb 24-27	FLEX/MSTC 2020	San Jose, California

[Click here for all events.](#)



We'd love your input. Please send feedback about this newsletter to
Michael Hall at semiglobalupdate@semi.org.

Follow us:



SEMI 673 S. Milpitas Blvd. Milpitas California 95035 United States
You received this email because you are subscribed to Newsletters from SEMI .
To unsubscribe or to update your email subscriptions, please visit the [email preferences](#) page.